

James Patterson Elementary

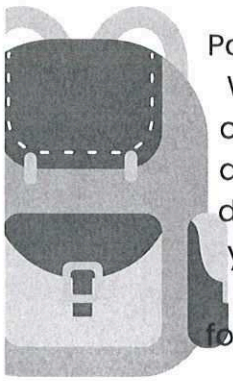
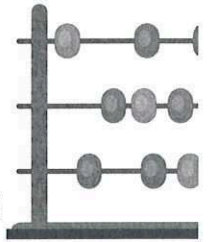
18702 Beechnut St.

Richmond, TX 77407

Phone: (281)327-4260

Fax (281) 327-4261

Angela Wallace – Principal
Callie Ford – Assistant Principal



On behalf of the staff at James Patterson Elementary, home of the Panthers. We are excited to welcome you to the 2025 - 2026 school year! We are looking forward to a productive partnership with you to ensure our children can achieve high levels of academic and social emotional development. We know a strong partnership with you will make a great difference in your child's education. We ask that you guide and support your child's learning by ensuring that he/she attends school daily and arrives on time, ready for the day's learning experience. Within the following pages you will find important information that will help you and your children to have a great start of the new school year.

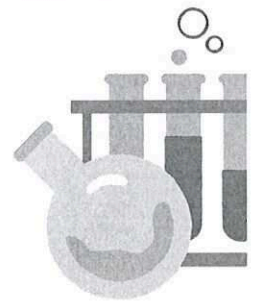
School Hours:

Breakfast is from 7:30 AM to 8:00 AM

School Begins at 8:05 AM

School Ends at 3:25 PM

****If a student arrives after the bell rings at 8:05 AM, the parent or guardian MUST SIGN IN THE STUDENT at the Front Office****



Please visit www.fortbendisd.gov for the following:

Bus Information (Transportation)

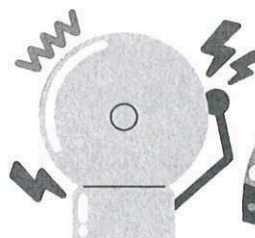
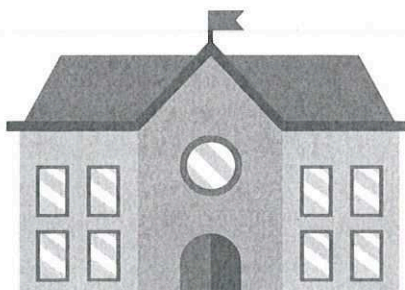
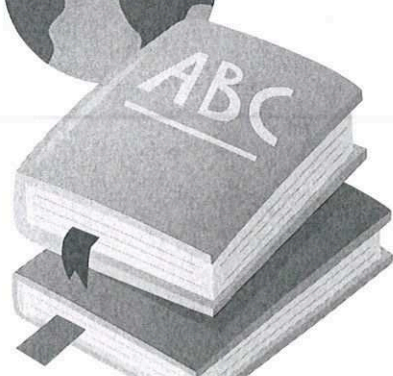
Extended Day Information and application

School Supply List

Please visit www.schoolcafe.com/fbisd (search for Patterson) for:

Free and reduced lunch application

Add money to student's account



Lunch:

- Please be sure to complete the online Free/Reduce Meal Program application.
- Visit www.schoolcafe.com/fbisd search for Patterson Elem (application opens on August 1, 2025)
- You can also add money to students' lunch account on the school café website or app.
- Lunch may be dropped off for students. There is a bookshelf in the Front Lobby that is labeled with the grade levels. Please fill out the green or orange piece of paper with your child's information, tape it on your child's lunch and place it on the correct grade level shelf. The teachers will check the bookshelf before recess or before lunch. Please note that you are leaving the lunch at your own discretion.
- **Lunch with your child** – Parents are allowed to have lunch with their child on **Tuesdays and Thursdays**. Due to limited seating, you must call the day of between 8:30 AM - 9:30 AM to be put on the schedule to have lunch with your child. **If you do not call and place your name on the list you will not be allowed in to have lunch with your child, no exceptions.** Only 2 people per child will be allowed in as long as they are on the emergency contact list. We must be fair to all our parents, and everyone must follow this rule. **Please note that you are only allowed to eat lunch with your child only.**

Safety:

The safety of our students, teachers and staff is the district's utmost priority. We strongly encourage you and your child to report immediately if someone is threatening to be violent, to do harm to others or to self. If you see something suspicious, please report it to the front office immediately. All visitors need to come in through the front office so that we may check you in. We ask that when entering or exiting the building to please make sure that the door closes behind you as a safety precaution.

Student Handbook and Code of Conduct / Parent Handbook / Dress Code:

The Student Code of Conduct has been developed to provide you with the district's guidelines on behavior for our students. This PDF can be downloaded and saved to your computer for your reference; it is located on the district's website. Included in the packet is the Dress Code and Telecommunications & Electronic Devices Policies for a quick reference.

Enrollment Verification/Skyward Family Access:

2025 – 2026 Student Verification Forms will be available to parents in Skyward Family Access beginning and ending. It is important that parents complete this information vis Family Access. In addition to updating student /family demographic information, parents must also complete custom forms including Consent Form, Medical/Emergency Information, Residency Questionnaire, Military Connected, Migrant Family Survey, Bring Your Own Device Agreement, Child Nutrition Acknowledgement, Library Opt-In Notification Form. As parents it is important to know how to login to Family Access before school starts to have access to view teacher gradebooks, complete online forms, setup notification and view your child's portfolio (which has grades, report cards, and absences).

Morning Student Drop Off / Arrival:

Our student drop-off area will be at the main entrance of the school. Please remain on the right-hand side of the yellow line. Make sure to pull up with your car to the next available cone and a staff member will assist your child to get out of the car. Students can be dropped off starting at 7:30 AM. Please do not drop your child off in the back parking lot. That is where the buses drop off students. There is no adult supervision for students who are dropped off before 7:30 AM unless your child is enrolled in the FBISD Extended Day Program.

Students must be in their classrooms by 8:05 AM. **All students who arrive after 8:05 AM MUST BE SIGNED IN BY A PARENT OR GUARDIAN IN THE FRONT OFFICE.** Students must have a tardy slip and give it to their homeroom teacher to be admitted in the classroom.

Afternoon Student Pick Up / Dismissal:

Patterson has 5 designated areas to dismiss students: car rider, walkers / biker riders, bus riders, Extended Day, and Day Care. Designated staff will be helping your child during dismissal. All students must have the appropriate transportation tag to be taken to the correct dismissal area. Transportation tags will be distributed on the first day of school. You must communicate with your child's teacher on how your student will be getting home.

- **Car Riders** – There is only one car rider lane. If your child is a car rider, make sure to pull up with your car to the next available cone. Make sure that your car rider tag is hanging in the rear-view mirror so that staff can see the car tag number that need to be called. **You will be asked to park and come inside if you do not have a car rider tag (no photos allowed due to safety).** Please always remain in your car. A staff member will bring your child to the car.
- **Bus Riders** – Bus riders are dismissed at the back of the school guided by several adults. Students are taken to their designated bus. **For students in grades K – 2nd with no siblings, an adult must be present at the stop area to receive the child, otherwise the student will be returned to the campus and you will need to come and pick them up.**
- **Day Care Riders** – Day Care riders are dismissed at the back of the school where the buses are. Students are guided by several adults to make sure that they get on the correct Day Care Vans.
- **Walkers** – Walkers are crossed by a designated staff member and a crossing guard. Our Walkers are Northeast (Grand Vista Springs and Vista Hills Dr.), South (Beechnut and Grand Vista Springs Dr.) or West (Students will be escorted to the walkway into the residential neighborhood to the West of the school). **Please note that walkers are classified as students who are walking to a nearby residence, and not transported by a vehicle. This rule will be strictly enforced, and addresses will be confirmed via Skyward by district and staff personnel.**
- **Bikers** – Students who ride their bike to come to school and go home, will be taken to the bicycle rack area by an adult.
- **Extended Day** – Teachers will escort students to the Extended Day room.

Visitors:

When visiting our school, all visitors must check in with the receptionist to get a visitor's pass. For safety reasons, we must always know who is in the building. A driver's license or a picture identification will be needed to check in.

Lunch with your child – Parents are allowed to have lunch with their child on **Tuesdays and Thursdays**. Due to limited seating, you must call the day of between 8:30 AM - 9:30 AM to be put on the schedule to have lunch with your child. **If you do not call and place your name on the list you will not be allowed in to have lunch with your child, no exceptions.** Only 2 people per child will be allowed in as long as they are on the emergency contact list. We must be fair to all our parents, and everyone must follow this rule. **Please note that you are only allowed to eat lunch with your child only.**

Early Dismissal Days:

Student will be dismissed at 12:10 PM on the following days: **September 25, 2025, December 19, 2025, February 12, 2026, and May 28, 2026.**

Teachers Professional Development Days (NO SCHOOL FOR STUDENTS):

The following days have been designated for professional learning development, and teacher planning days. There will be no school for students on these days: **September 26, 2025, October 20, 2025, January 5 – 7, 2026, February 13, 2026, and March 6, 2026.**

Tuesday Folder:

This is our way of communication between school and home. Every student receives a folder at the beginning of the school year. Information regarding programs, events, instructional changes, etc. will be found in this folder which are sent home to you every Tuesday. Please ensure that you check your child's backpack every Tuesday for the folder.

School Supplies:

A general school supply list by grade level is attached for your attention. The teacher may ask for something specific for his/her class that is not on this list. The one thing that we do ask, for your student to please have a set of headphones that they can use when working on the class IPADs or computers.

Please make sure to label your students lunch box, jackets, water bottles, anything personal etc.

Volunteering:

For safety and security reasons to be able to volunteer on campus, field trips, PTA, etc. you must have a **FBISD Criminal Background Check**. This background must be completed each year. If you do not have a FBISD Criminal Background Check you will not be allowed to volunteer in any capacity.

We are thrilled to welcome your child to James Patterson Elementary for the upcoming 2025-2026 academic school year!

Your child's enrollment is an excellent opportunity to grow, learn, and thrive in a supportive environment. We are excited to embark on this educational journey together. Here's to a GREAT YEAR!

Sincerely,

Angela Wallace – Principal

Callie Ford – Assistant Principal



2025 - 2026
Attendance Procedures
Elisa Gallo –
Registrar / Attendance Clerk
attendancejpe@fortbendisd.gov
281-327-4270



Notes REQUIRED after an absence

Please email attendance to attendancejpe@fortbendisd.gov or send a note within 5 school days of an absence regardless of reason. You can also reply to the automatic email regarding your child's absence. Notes must include student's name, grade, reason for absence, parent signature, and contact number. If a note is not received within the 5 school days of returning to school, it will be coded as unexcused.

- It is NOT necessary to call the school when your student is absent.
- **Please note that “family vacations or personal reasons are considered unexcused absences.”**

Medical (Doctor's Note)

A doctor's note is required for absences of four (4) consecutive days or more.

School Clinic

Students signed out of the clinic will be marked as excused for the day of. However, additional absent days will require a note/email excuse.

Late Arrivals

Students must be in class and seated by 8:05 AM, otherwise they will be marked Tardy. Parents must come in the building to sign in students if they arrive after 8:05 AM as there is no staff out front to bring them in.

Early Pickup

Students may not be picked up after 2:30 PM. Any parent/guardian who comes later than 2:30 PM should remain in the car rider line to pick up their student(s). Please do not park and come inside to pick up your child after 2:30 PM. Emergency exceptions will be approved by an Administrator.

Late Pick-Up

All students must be picked up when school dismisses at 3:25 PM. Our front office closes at 4:00 PM. Exemption: after school events/tutorials that the students have been granted permission to attend.

DRESS CODE

DRESS AND GROOMING

The District believes the Student Dress Code shall promote the attributes of the Profile of a Graduate. Therefore, students are expected to dress in a way that promotes respect for self and others, a safe learning environment, and honors the diversity of the learning community.

Students and parent/guardians may determine the student's personal dress and grooming standards, provided they comply with the general guidelines set forth in this Code and Board Policy FNCA (Local). Generally, students shall be dressed and groomed in a manner that is clean and neat, does not cause distraction from learning, maintains a positive learning climate, and that does not disrupt the learning environment. The District prohibits pictures, emblems, or writings on clothing that advertise or depict tobacco products, alcoholic beverages, drugs, or any other prohibited substance.

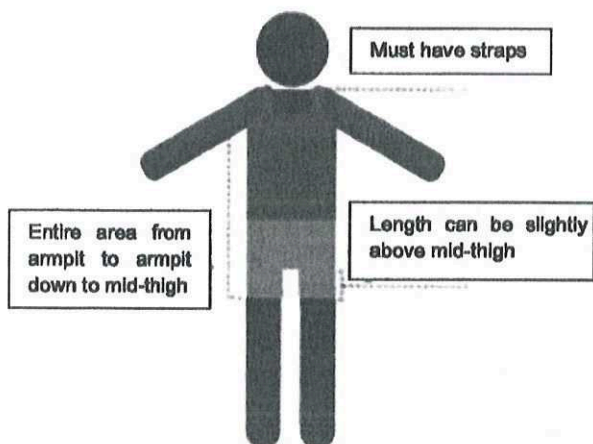
Students must comply with the following dress and grooming standards:

Shirts, Blouses, Sweatshirts, Sweaters, Vests

- Shirts, blouses, sweatshirts, sweaters, vests that expose undergarments and/or midriff are prohibited;
- Shirts, blouses, sweatshirts, sweaters, vests must not depict or reference alcohol, drugs, tobacco, weapons, nudity, gang affiliation, death, violence, vulgar or obscene language or images, and/or insults to race, religion, gender, or ethnicity, or other emblems or writing that may be expected to cause a material or substantial disruption of, or inference with, normal school operations.

Dresses, Jumpers, Skirts, Shorts, Skorts, Pants, and Jeans

- Dresses, jumpers, skirts, and skorts may be worn at a length that is slightly above mid-thigh;
- Shorts, jeans, and all pants shall be worn at the hip or higher and must cover undergarments;
- Shorts may be worn at a length that is slightly above mid-thigh;
- Athletic wear, which may include yoga pants, stretch leggings and fitness tights, are permissible as long as they do not reveal undergarments, do not have sections of see-through material, or are worn with a shirt that covers the posterior, or are not disruptive to the school environment.



ALL STUDENTS

Clothing must cover areas from one armpit to the other armpit, down to the mid-thigh. Tops must have shoulder straps and be long enough to adequately cover the waistline and not expose the midriff.

Shoes

- Shoes shall be worn, and if designed to be tied shall be properly tied;
- Elementary students shall not wear flip-flops or shoes with no back/heel strap;
- Unsafe footwear is not permitted (i.e., house shoes, slippers);
- Appropriate shoes must be worn during PE/athletics classes, as well as during lab activities in science, CTE, etc.

Hair

- All hair, including facial hair, shall be neat, clean, and well groomed, and worn in a style that is not distracting;
- Mustaches, beards, or goatees shall be neat, clean, and well groomed, and worn in a style that does not display derogatory remarks, symbols, or statements that disrupts the learning environment. Hair markings must not depict or reference alcohol, drugs, tobacco, weapons, nudity, gang affiliation, violence, vulgar or obscene language, or images that substantially disrupt or interfere with normal school operations. Drawings, icons, and/or other markings cut into the hair, including eyebrows, and not associated with required religious markings or hairstyles are not permitted.

Miscellaneous

- Proper undergarments shall be worn at all times;
- Revealing clothing of any type may not be worn;
- No clothing that has been ripped, torn, or cut in a way as to reveal undergarments, or midriff, chest or posterior;
- Clothing, including face coverings, with profanity, obscene patches, reference to alcohol, drugs, weapons or tobacco, or anything that may be construed as violent, vulgar or obscene language or images, and/or insults to race, religion, gender, or ethnicity, or other emblems or writing that may be expected to cause a material or substantial disruption of, or interference with, normal school operations;
- Any attire, tattoo, icons, or markings on body, e.g., bandanas, shoelaces, chains, t-shirts, etc., that is distracting, causes a disturbance, or identifies a student as part of an unauthorized group, gang, or society are not permitted that includes but is not limited to virtual background choices. No pajama wear of any type except on-campus designated days;
- No pajama wear of any type except on-campus designated days;
- Body piercings that are distracting or that pose a safety concern are not permitted;
- No hats, caps, doo-rags, wave caps, bandanas or hoods worn indoors, except on campus designated days, or during designated times permitted by the campus; and
- No sunglasses may be worn inside the building unless there is a medical note on file.

PHYSICAL EDUCATION (PE) UNIFORM GUIDELINES

Dressing out for PE is mandatory. This is for hygiene and safety purposes. This priority is included in our TEKS (5B). Students are expected to bring athletic clothing to change into each day for PE class. Students should not stay in the clothing they wore to school during PE.

It is not required for students to purchase a school PE uniform. Campuses offer PE uniforms to families to purchase to ensure they have easy access to athletic clothing that is in dress code.

If a family prefers to purchase their own uniform, they can do so as long as it meets the requirements below:

- The uniform meets the school dress code: This includes shorts that are the proper length and a loose-fitting t-shirt.
- The uniform matches school colors.

New State Law Limits Student Use of Personal Devices During the School Day

A new law was passed during the 89th Texas Legislative Session, **House Bill 1481**, bringing significant changes to how students may use personal electronic devices on campus. Starting in the **2025–26 school year**, students in all Texas public and charter schools, including Fort Bend ISD, will be required to keep personal communication devices **powered off and out of sight while on school property during the school day**.

This includes items such as **cell phones, smart watches/glasses, two-way radios (walkie-talkies), tablets, and similar technology**. The law is designed to support focused, distraction-free learning environments and enhance campus safety. Students with medical needs or special education accommodations will be granted exceptions as documented.

Prohibited Possession: Students in prekindergarten-grade 1 are prohibited from possessing or using a personal communication device on school property during the school day.

Prohibited Use: Students in grades 2-12 shall not use a personal telecommunication device on school property during the school day. While on school property, the student shall store any personal communication devices in their backpacks. Accessing any personal telecommunication device anywhere on campus during the school day is strictly prohibited.

Key Expectations for FBISD Students

Beginning in Fall 2025, the following guidelines will be in effect for all FBISD campuses:

- Students must turn off all personal electronic devices while on school property from **"Bell to Bell"**, starting at the beginning bell, until the final bell of the day.
- Devices must remain **stored in backpacks or lockers** and should not be carried in pockets or worn during the day.
- Any device that is used or visible during school hours may be **confiscated**, and the student may receive a **disciplinary consequence**.

These expectations apply to **all indoor areas**, including:

- Classrooms
- Hallways
- Library

- Cafeteria
- Restrooms and locker rooms
- Any other shared campus spaces

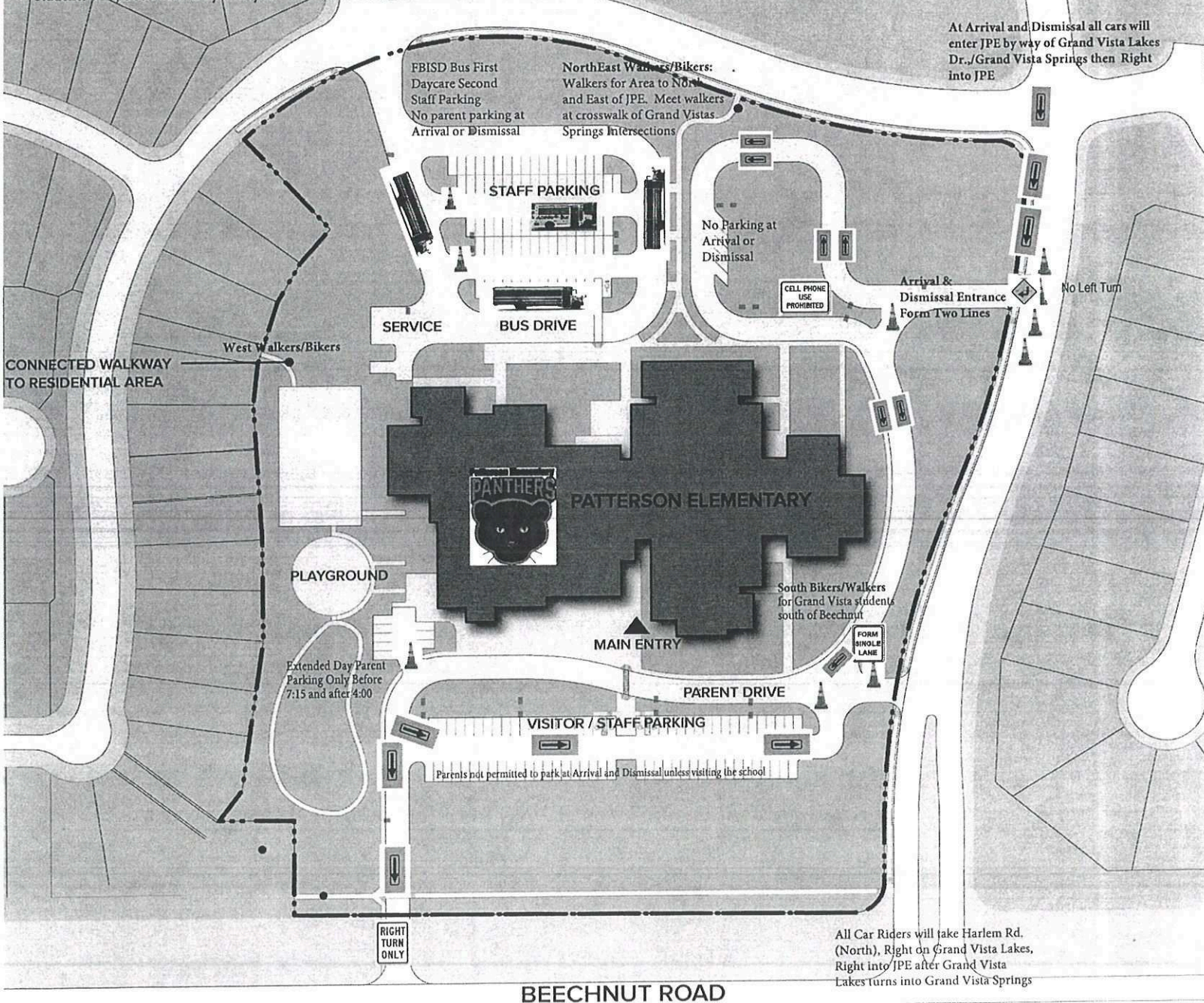
Campus leadership will determine when students may use their devices to connect with parents or guardians about transportation or after-school plans, following the final dismissal bell.

Communication During the School Day

We understand families may need to reach their children during school hours. Please contact the **campus front office**, and staff will ensure your message is delivered. If a student needs to make a call during the day, they should go to the front office for assistance.

We appreciate your support as we implement this state-mandated change to help create a safer, more focused school environment for all students.

- If you need to change your child's dismissal plan, you must notify the teacher in writing. Children will follow their original dismissal plan if a note is not received. No changes in dismissal may be made after 2:15 pm.
- Parents will be given car visor tags with a assigned number that must be displayed on the rear-view mirror of the vehicle. The front drive will be used to drop off and pick up car riders. Without the sign, you will need to come to the front office to check out your child. Students MUST be picked up no later than 3:40pm.
- The bike rack is located on both the front and back of the school. Make sure to lock your bikes to avoid theft.
- **Biker/Walker Area NorthEast Side:** The crosswalk at Grand Vista Springs and Vista Hills Drive will be the designated meeting place for younger and older siblings to meet before starting to walk home. Parents wishing to meet their children after school should also use this as a meeting place. Walking/biking will be the fastest and easiest way for your child to leave from school. All walkers will cross at the crossing guard.
- **Biker/Walker Area West Side:** Students will be escorted to the walkway into the residential neighborhood to the west of the school.
- **Biker/Walker Area South Side:** Students will be escorted to the crosswalk at Beechnut Street and Grand Vista Springs Dr.
- Students will not be allowed to be picked up in the faculty parking lot, along the street (Vista Hills Drive) or from the cafeteria or gym doors.
- **Rainy Day Plan:** Students will be in the building and dismissed when their car arrives. Parents are asked not to come to the front office area on rainy dismissal days. Walkers and bikers will follow their rainy day plan developed by their parents and given in writing to their homeroom teacher. Walkers will be dismissed from the gym doors near the playground.
- No students will be checked out after 2:45pm.
- Students will be counted tardy if they are not in their classroom at 8:10 when school starts.



August

July 31st-Aug 1st District Professional Learning Days/
No Students
4th Teacher Work Day/No Students
5th-8th Professional Learning Days/No Students
11th Teacher Planning Day/No Students
12th First Day of Classes 1st Semester

September

1st Student/Teacher Holiday/Labor Day
25th Early Release-Elementary
26th Professional Learning Day/No Students

October

13th-17th Student/Teacher Holiday
20th Teacher Planning Day/No Students

November

24th-28th Student/Teacher Holiday

December

18th Early Release - MS/HS
19th Early Release/All Students
22nd-31st Student/Teacher Holiday/Winter Break

January

1st-2nd Student/Teacher Holiday/New Year's Day
5th Teacher Work Day/No Students
6th Professional Learning Day/No Students
7th Teacher Planning Day/No Students
8th First Day of Classes 2nd Semester
19th Student/Teacher Holiday/Martin Luther King Jr. Day

February

12th Early Release-Elementary
13th Professional Learning Day/No Students
16th Student/Teacher Holiday/
Inclement Weather Make-Up Day

March

6th Teacher Planning Day/No Students
16th-20th Student/Teacher Holiday

April

3rd Student/Teacher Holiday

May

25th Student/Teacher Holiday/Memorial Day
27th Early Release MS/HS
28th Early Release - All Students/Last Day for Students
29th Teacher Work Day/No Students/
Inclement Weather Make-Up Day

June

19th Student/Teacher Holiday/Juneteenth

July

6th-10th District Office and Campuses Closed

KEY

Teacher Work Day	[] Beginning/End of Nine Weeks
Professional Learning	{ } Exams
Teacher Planning	Early Release ES
First Day of Semester	Early Release HS/MS
District Professional Learning Day	Early Release HS/MS/ES
Holiday	Inclement Weather Make-up Day

This Calendar Reflects the Following	ES	MS	HS
Total Days of Instruction	171	171	171
Total Teacher Contract Days	187	187	187
Operational Minutes per Full Day	440	440	440
Operational Minutes per Early Release Days	240	270	245
Total Operational Minutes Pre-Waiver	74,440	74,560	74,460
Waiver Minutes for Professional Learning	2,100	2,100	2,100
Total Operational Min. w/ Approved Waivers	76,540	76,660	76,560
Bank of Operational Minutes	940	1,060	960

HB 2442 requires a minimum of 75,600 operational minutes with any applicable waivers and at least a minimum bank of 840 operational minutes. The bank of operational minutes can be used in the event of bad weather and other issues of health and safety. FBISD reserves the right to revise the calendar, pending Board approval, to meet the minimum required operational minutes each year.

S	M	T	W	T	F	S
August 2025						
27	28	29	30	31	1	2
3	4	5	6	7	8	9
10	11	12	13	14	15	16
17	18	19	20	21	22	23
24	25	26	27	28	29	30
31						

S	M	T	W	T	F	S
September 2025						
	1	2	3	4	5	6
7	8	9	10	11	12	13
14	15	16	17	18	19	20
21	22	23	24	25	26	27
28	29	30				

S	M	T	W	T	F	S
October 2025						
			1	2	3	4
5	6	7	8	9	10	11
12	13	14	15	16	17	18
19	20	21	22	23	24	25
26	27	28	29	30	31	

S	M	T	W	T	F	S
November 2025						
						1
2	3	4	5	6	7	8
9	10	11	12	13	14	15
16	17	18	19	20	21	22
23	24	25	26	27	28	29
30						

S	M	T	W	T	F	S
December 2025						
						1
2	3	4	5	6	7	8
9	10	11	12	13	14	15
16	17	18	19	20	21	22
23	24	25	26	27	28	29
30	31					

S	M	T	W	T	F	S
January 2026						
				1	2	3
4	5	6	7	8	9	10
11	12	13	14	15	16	17
18	19	20	21	22	23	24
25	26	27	28	29	30	31

S	M	T	W	T	F	S
February 2026						
1	2	3	4	5	6	7
8	9	10	11	12	13	14
15	16	17	18	19	20	21
22	23	24	25	26	27	28

S	M	T	W	T	F	S
March 2026						
1	2	3	4	5	6	7
8	9	10	11	12	13	14
15	16	17	18	19	20	21
22	23	24	25	26	27	28
29	30	31				

S	M	T	W	T	F	S
April 2026						
						1
2	3	4	5	6	7	8
9	10	11	12	13	14	15
16	17	18	19	20	21	22
23	24	25	26	27	28	29
30	31					

S	M	T	W	T	F	S
May 2026						
						1
2	3	4	5	6	7	8
9	10	11	12	13	14	15
16	17	18	19	20	21	22
23	24	25	26	27	28	29
30	31					

S	M	T	W	T	F	S
June 2026						
						1
2	3	4	5	6	7	8
9	10	11	12	13	14	15
16	17	18	19	20	21	22
23	24	25	26	27	28	29
30	31					

S	M	T	W	T	F	S
July 2026						
						1
2	3	4	5	6	7	8
9	10	11	12	13	14	15
16	17	18	19	20	21	22
23	24	25	26	27	28	29
30	31					

1st Semester Grading Period	81 Days
1st Nine Weeks	8/12 - 10/10 42
2nd Nine Weeks	10/21 - 12/19 39

2nd Semester Grading Period	90 Days
3rd Nine Weeks	1/8 - 3/13 43
4th Nine Weeks	3/23 - 5/28 47

General Supply List

Listed below is the general school supply list for all students attending Fort Bend ISD elementary schools. Please note some items on this list may need to be replenished during the year. There may be additional items needed by individual campuses.

IMPORTANT NOTES for 2025-26: Please label all personal belongings. Students are welcome to bring their own face covering for personal use.

Teachers share additional supply needs during the school year, which might include items such as plastic storage bags (quart & gallon), clear tape, liquid school glue, dry erase markers, binders, index cards, facial tissue, or other items for instructional use. Please consult your child's campus for any specific details pertaining to his/her grade.

Suggested General Supply List for Grades PK-1:

Pre-Kindergarten	Kindergarten	First Grade
6 glue sticks 2 boxes of #2 standard pencils 2 pink erasers 1 plastic pencil box 2 boxes of crayons (24) 1 box of markers (standard/washable) 1 pair of blunt/safety scissors 1 package of construction paper 2 pocket folders with brads 2 boxes of facial tissue 1 bottle of hand sanitizer 1 package of alcohol-based disinfectant wipes 1 primary journal, 8x10 (white primary paper, red baseline, wide-ruled, and drawing box) 1 bottle of glue 1 pack of non-toxic compound playdough with 8 Colors 1 nap mat or blanket <i>*Pre-K3 - 1 blanket. All other supplies will be provided by Head Start in collaboration classrooms.</i>	6 glue sticks 2 boxes of #2 standard pencils 2 pink erasers 1 plastic pencil box 1 box of crayons (24) 1 box of markers (standard/washable) 1 pair of safety scissors 1 package of construction paper 3 pocket folders with brads 2 boxes of facial tissue 1 bottle of hand sanitizer 1 package of alcohol-based disinfectant wipes 1 package standard sticky notes 4 notebooks, 8x10 (white primary paper, red baseline, wide-ruled, and drawing box) 1 composition notebook, primary style 1 box black dry-erase markers	6 glue sticks 2 boxes of #2 standard pencils 2 pink erasers 1 plastic pencil box 1 box of crayons (24) 1 box of markers (standard/washable) 1 pair of safety scissors 1 package of construction paper 4 pocket folders with brads 2 boxes of facial tissue 1 bottle of hand sanitizer 1 package of alcohol-based disinfectant wipes 1 package standard sticky notes 4 notebooks, 8x10, white primary paper, red baseline, wide-ruled 4 hard cover composition notebooks, primary style 1 box of map coloring pencils 2 packages of notebook paper, wide-ruled

Suggested General Supply List for Grades 2-5:

6 glue sticks 2 boxes of #2 standard pencils 2 pink erasers 1 pencil bag 1 box crayons (24) 1 box markers (standard/washable) 1 pair child scissors 1 package construction paper 6 pocket folders with brads 1 package standard sticky notes	1 12" ruler marked with inches and centimeters 1 package map coloring pencils 2 pks notebook paper, wide-ruled (replenished as needed) 4 spiral or composition notebooks 4 hard cover composition notebooks 1 package black dry-erase markers 2 boxes of facial tissue 1 bottle of hand sanitizer 1 package of alcohol-based disinfectant wipes 1 package of ½" graph paper (4 th -5 th Grade ONLY)
---	--

Optional Technology Items:

Universal Stylus Touch Screen Pen (Passive) (For use with touch screen devices)

Headset/Headphones or earbuds with mic (compatible w/Windows laptops for 2nd – 5th and iPads for K-1st)